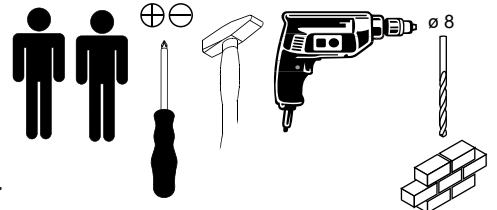


FACKELMANN®



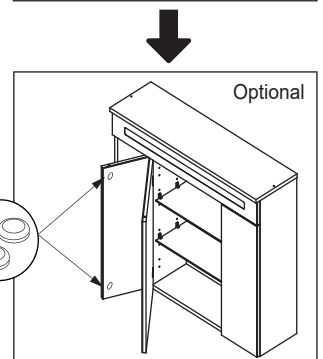
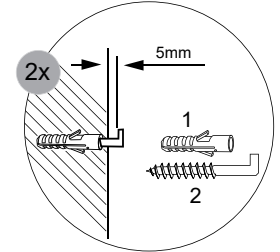
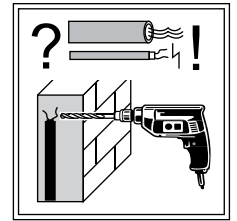
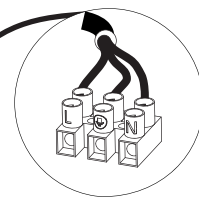
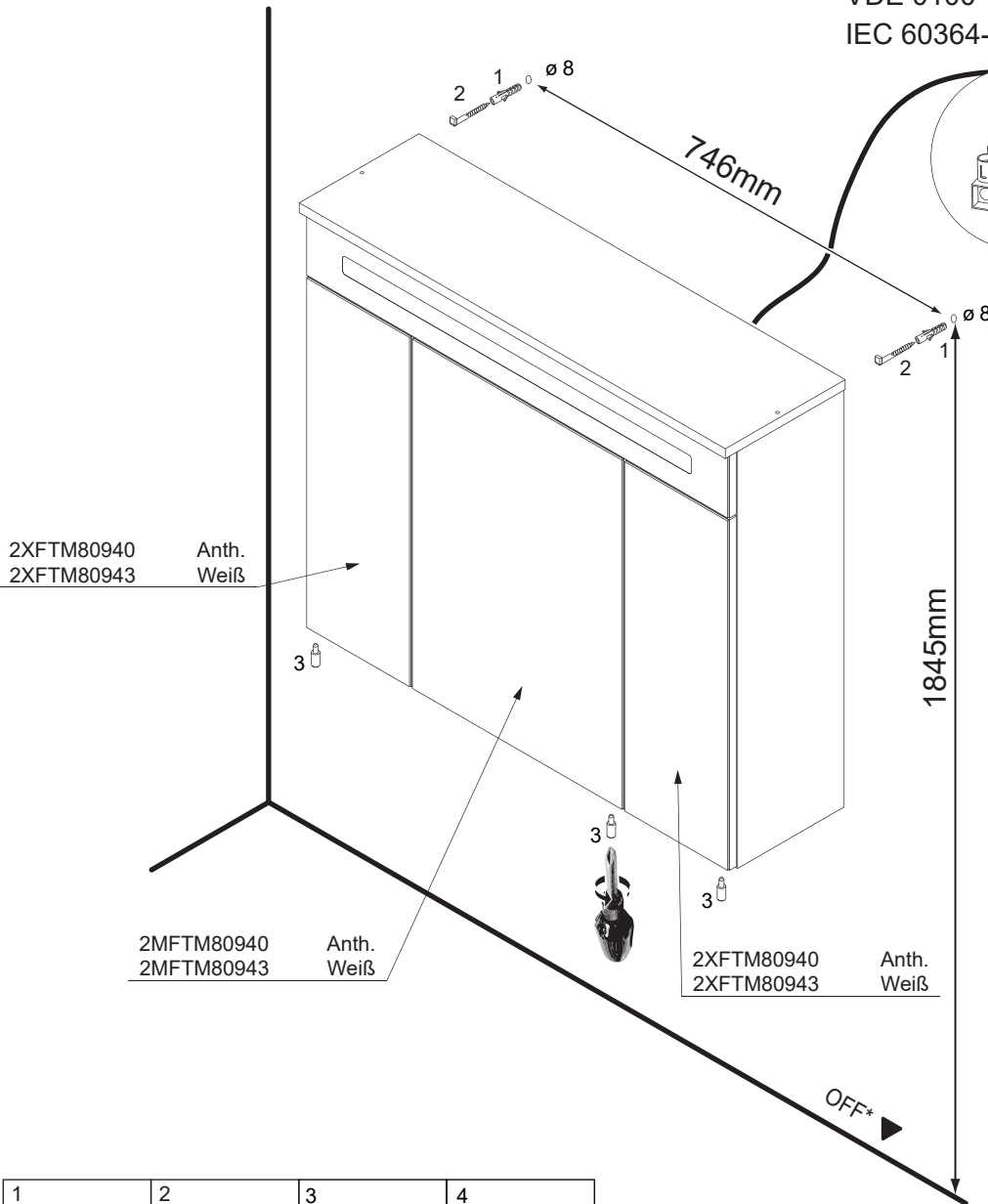
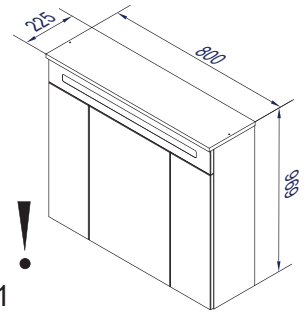
Dieses Produkt enthält Lichtquellen der Energieeffizienzklasse F.
This product contains light sources of energy efficiency class F.

80960/80966CH

80961/80967CH

80963/80969CH

230 V ~ 50Hz
VDE 0100-701
IEC 60364-7-701



1	2	3	4
4BD8000000	4HS5.8X650	4SLB810001	2BB268X1.6
2 x	2 x	3 x	2 x

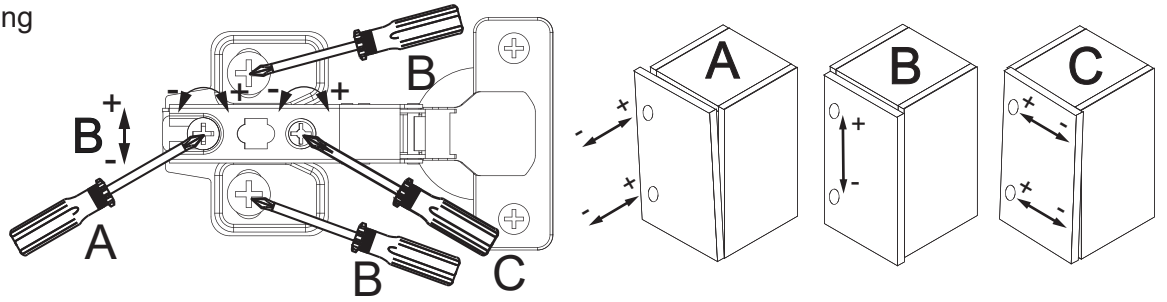
*OFF = Oberkante fertiger Fußboden
*OFF = Top edge of finished floor

Alle Maßangaben sind ca.-Maße und können geringfügig abweichen.
All measurements are approximate and may vary slightly.

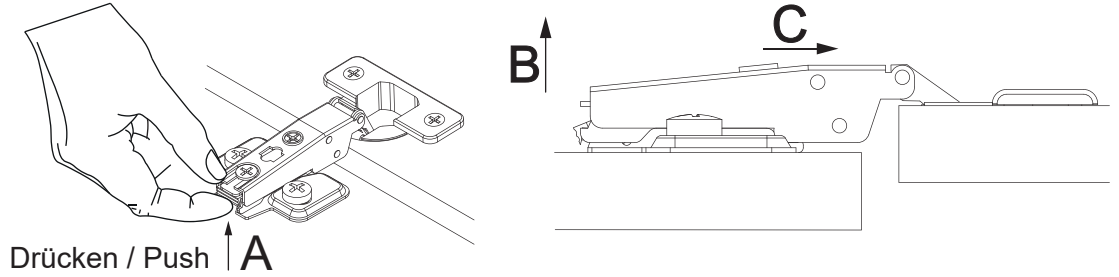
FACKELMANN GmbH + Co. KG
Sebastian-Fackelmann-Str. 6
91217 Hersbruck • Deutschland
FAX: 09151/811-294
Servicetelefon: 09151/811-206
servicebm@fackelmann.de
www.fackelmann.com

5BB0809600 S1 39/22

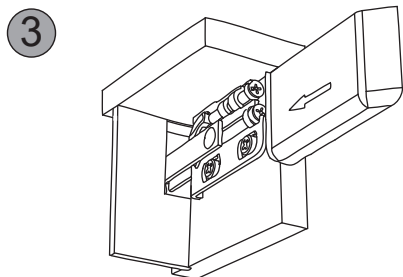
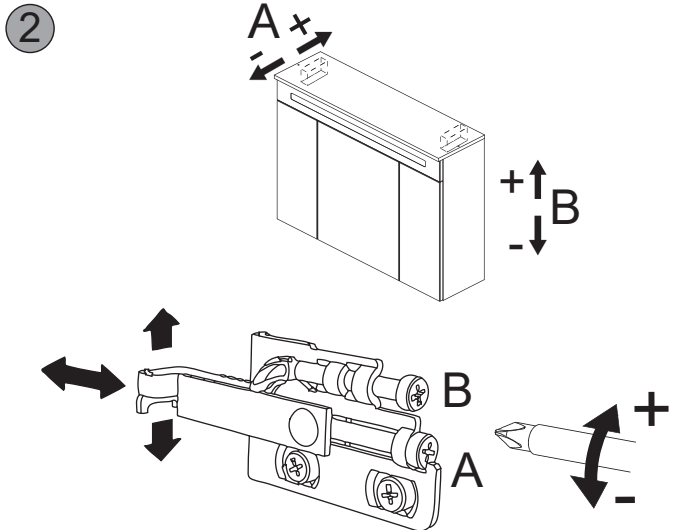
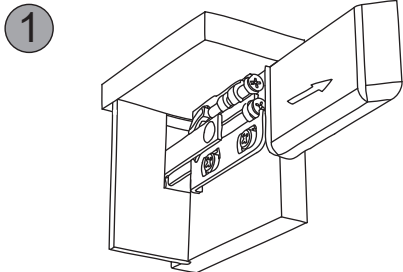
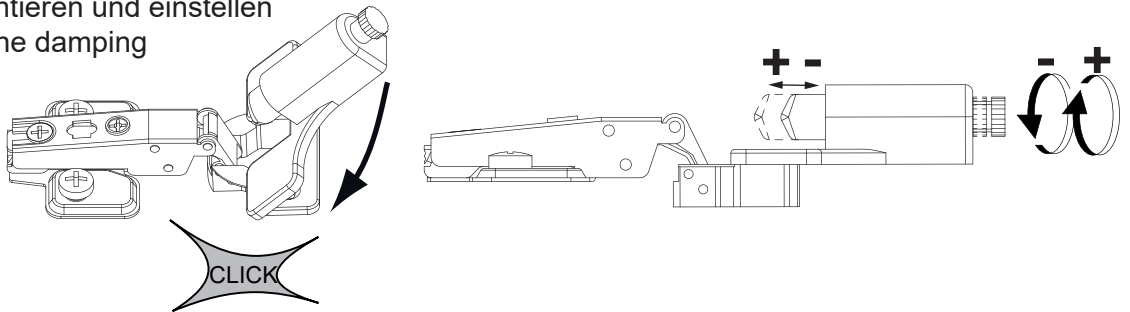
Scharriereinstellung
Hinge adjustment



Lösen der Scharriere
Release of the hinges



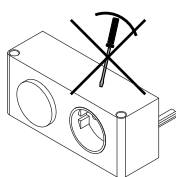
Die Dämpfung montieren und einstellen
Install and adjust the damping



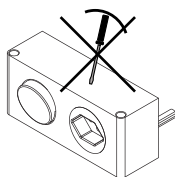
VDE 0100-701 !
IEC 60364-7-701 !

Eine defekte Elektrobox
ist vollständig durch eine
neue Box zu ersetzen.

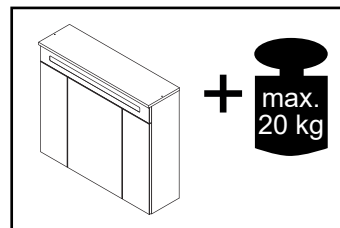
The trafo-box cannot be
repaired and must be
replaced.



4SL0834729
MAX. 16 A
230 V ~ 50Hz



4SL0834791 CH
MAX. 10 A
230 V ~ 50Hz



+ max.
20 kg

FACKELMANN®

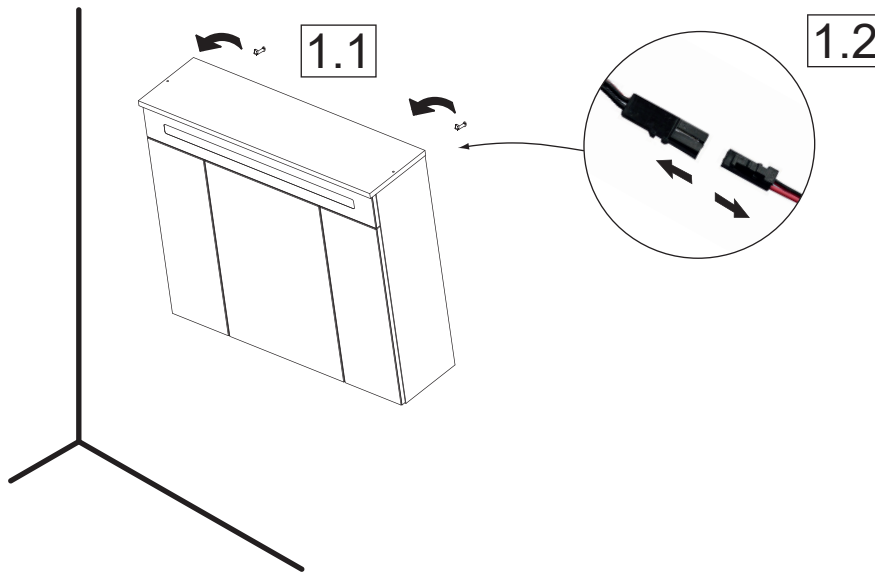
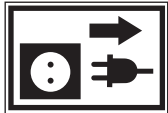


Austausch LED-Band/
change of LED-stripe **80960/1/3/6/7/9**

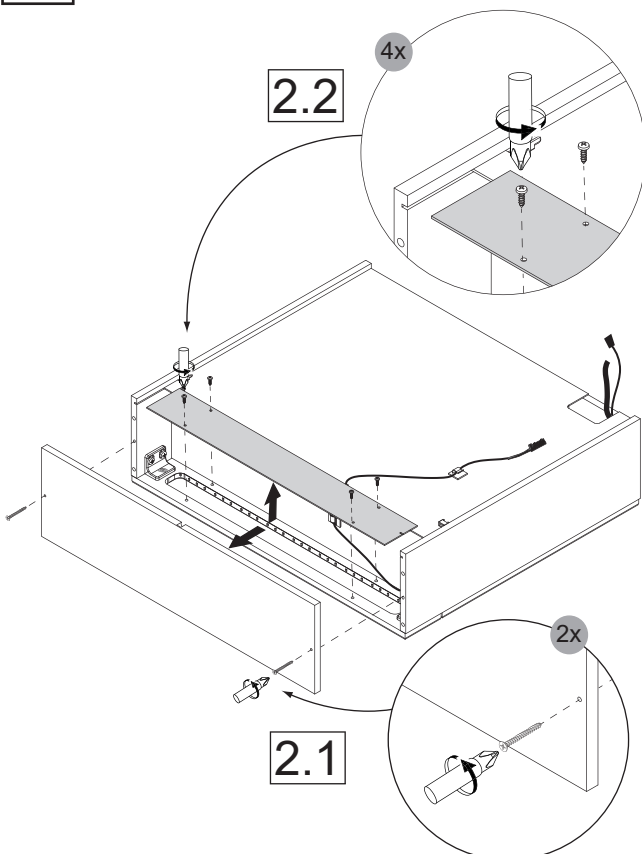


Achtung:
Vor dem LED-Austausch Glasböden
aus dem Schrank entfernen!
Attention:
Remove glass from the cupboard
before changing the LED-stripe!

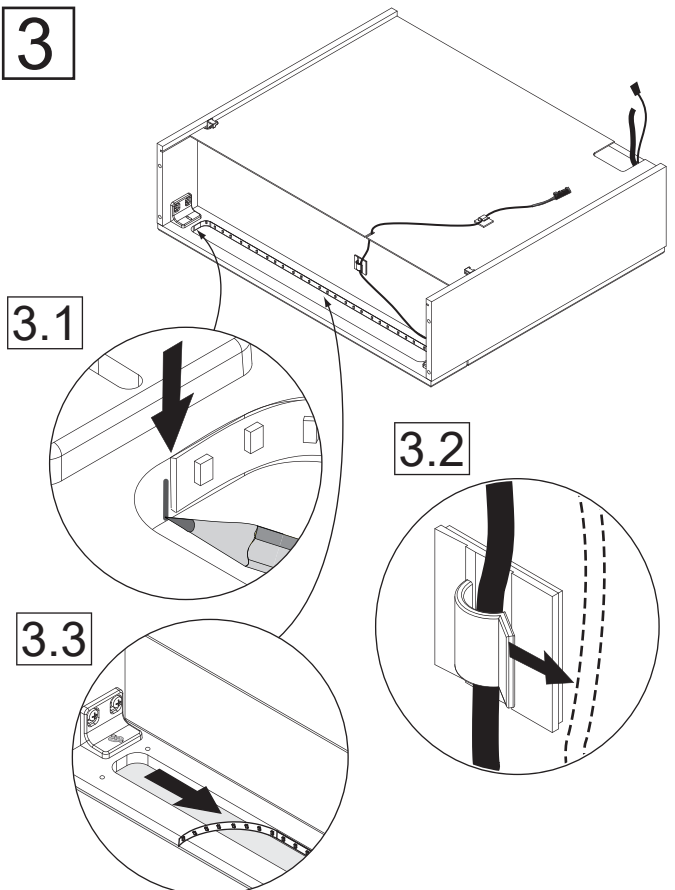
1



2

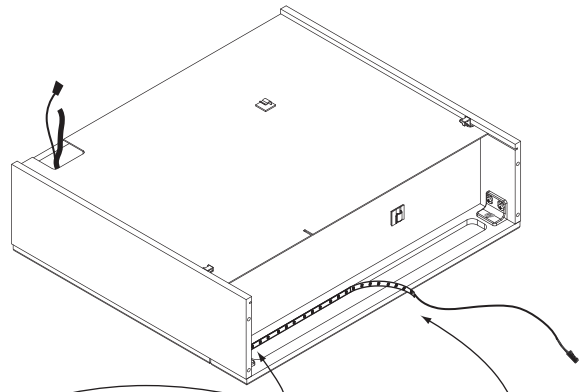


3

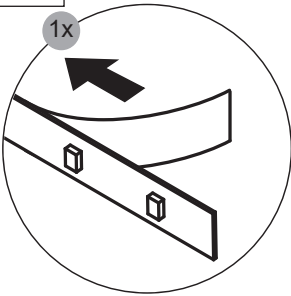


4

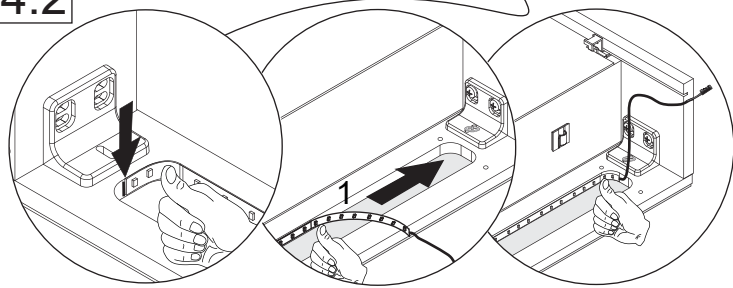
Ersatzteil/ replacement part



4.1

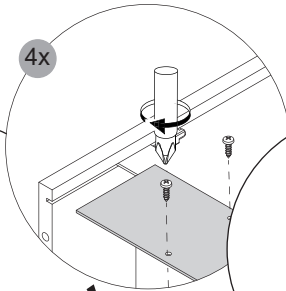


4.2

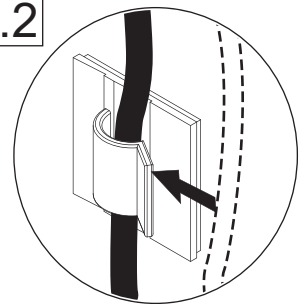


5

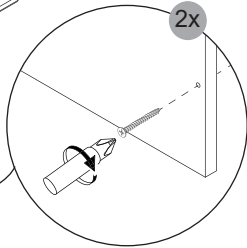
5.1



5.2

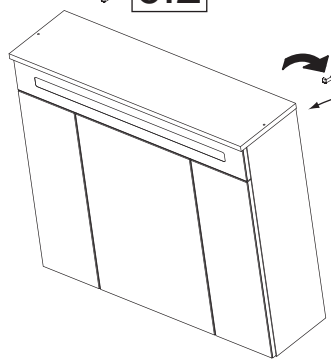


5.3

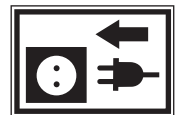
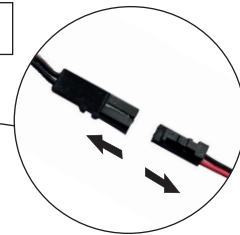


6

6.2



6.1



FACKELMANN

5BB0829630 S4 39/22